

Workforce Snapshot

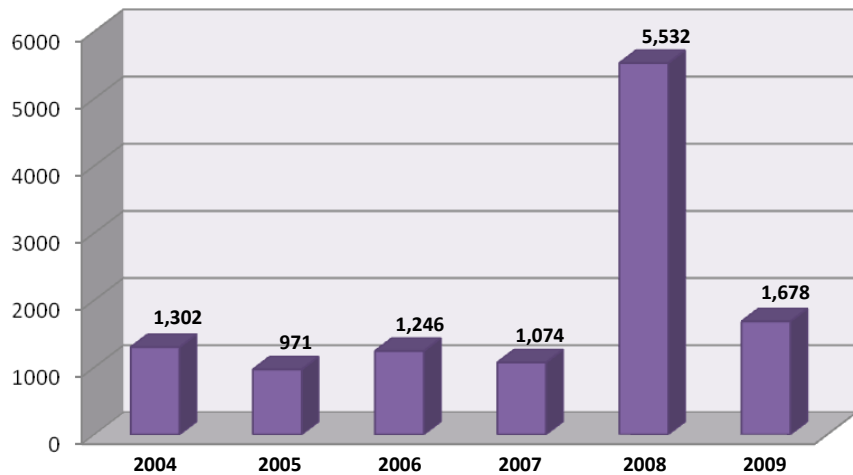
Southwest Wisconsin Workforce Development Board
December 2009



2009 Dislocations

| | |
|----------------------|--------------|
| Alcoa | 293 |
| Alliant Energy | 34 |
| AMTEC Corporation | 55 |
| Angus Young | 9 |
| Beloit Clinic | 16 |
| Bourns Automotive | 20 |
| CB & K | 29 |
| Cub Foods | 75 |
| Dean Health Care | 5 |
| Freedom Plastics | 93 |
| General Motors | 113 |
| Hormel Foods | 40 |
| Hufcor | 90 |
| Lab Safety Supply | 50 |
| Kuhn North America | 100 |
| Morgan Corp. | 35 |
| Regal Beloit Corp. | 33 |
| Rockwell | 219 |
| Scot Forge | 44 |
| Seats, Inc. | 45 |
| SSI Technologies | 40 |
| United Alloy | 15 |
| Warner Electric | 65 |
| Wausaukee Composites | 61 |
| Woodbridge | 99 |
| Total | 1,678 |

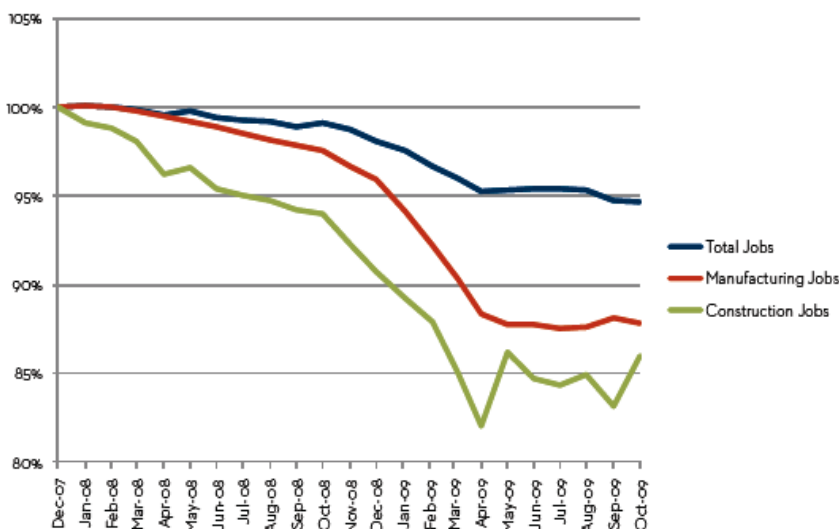
Dislocations in Southwest Wisconsin WDA By Year



Dislocation information is obtained through Worker Adjustment and Retraining Notification (WARN) notices, company confirmation and press coverage. Information may not reflect unreported layoffs, small dislocations or the dissolution of self-employed positions or those tied solely to commission.

Note: Anticipated layoffs for early 2010 (Sanford Business-to-Business & Bourns Automotive) are not included.

PERCENT CHANGE IN MANUFACTURING, CONSTRUCTION, AND TOTAL JOBS IN WISCONSIN, DECEMBER 2007 TO OCTOBER 2009



Construction jobs up, manufacturing shows small loss

The construction sector in Wisconsin gained 3,500 jobs from September to October. Even so, the construction industry has been badly hit, its workforce shrinking some 14 percent, or 17,400 jobs, since December 2007. As the state heads into winter, construction jobs are likely to fall yet again.

Although Wisconsin lost 1,400 manufacturing jobs between September and October, manufacturing employment has held relatively steady over the last six months. Still, Wisconsin's manufacturing sector has 60,700 fewer jobs than when the recession started, representing a 12 percent loss within this sector and accounting for 40 percent of Wisconsin's total job loss.

Source:

[Center on Wisconsin Strategy \(COWS\) Job Watch](#)

Wisconsin ranks fourth in filings from mass layoffs

By Joel Dresang of the *Journal Sentinel* - Nov. 20, 2009

Wisconsin ranked fourth in initial unemployment claims filed from mass layoffs and plant closings last month, the Labor Department reported Friday. Just shy of 11,500 Wisconsin workers applied for jobless benefits as a result of employers dismissing 50 or more of their employees, a 17.5% increase from the year before. The only states with higher numbers were California, Illinois and Florida. Since the recession began 23 months ago, employers have initiated almost 50,000 mass layoffs triggering more than 5 million initial unemployment claims.