

CORD

---Collaborative Organizations Responding to Dislocation

November 1, 2009

Inside This Issue

- 1 'Reinventing' Your Career
- 2 Be Ready for That Interview
- 3 See Dislocated Worker Interviews on *Discover* *Janesville* TV Program
- 3 *MAGIC* Can Help You
- 4 Classes of Interest

"Matching higher education to future needs is not easy."

RE-INVENTING CAREERS IN HIGH-DEMAND FIELDS

Throughout the country, innovative partnerships are often at the center of creating jobs in high-demand fields. One highly-publicized field is 'green' energy, but other fields such as health care and life sciences have witnessed strong growth, albeit partially due to the flow of federal stimulus dollars.

As a result, people are flocking to educational offerings. In fact, according to the Career College Association (CCA) in Washington, nationally nearly four of every 10 adults are seeking higher education, and of those, a third are 'career re-inventers.' Career colleges have seen average annual growth of about 10 percent in recent years.

Locally, that trend is even more pronounced as both Blackhawk Technical College and UW-Rock County have seen record numbers of students enrolling. At BTC, enrollments have increased by more than 44% since the fall semester of 2007.

Among BTC programs that are in high demand are the higher wage-paying health science fields, including nursing, physical therapy assistant, radiology, medical sonography, medical assistant, lab assistant, as well as manufacturing occupations in welding, industrial maintenance, HVAC, electrical-mechanical, and CNC. Energy efficiency instruction has been added into the HVAC curriculum, and a new course, Principles of Sustainability, is being offered in BTC's Agribusiness program, but is appropriate for any program. BTC is also investigating if a 'green' manufacturing curriculum for entry level positions can be added so students can be 'well-served' on environmentally-friendly practices in manufacturing.

UW-ROCK COUNTY EXPANDS NUMBERS, CLASSES, SERVICES

At UW-Rock County, 1,167 students enrolled this fall, up by 12% over 2008 (1,038 students) and a resounding 28% from 2007 (912 enrolled). The Full-Time Equivalency (FTE) count is up by 31%! The most popular majors include business, engineering, and health sciences. With new bachelor's degrees available on-campus in mechanical and electrical engineering (through UW-Platteville) plus a B.S.N. nursing degree, those two fields surpassed communication and sociology, which were in the top four last year.

In addition, 'green' thinking is now more part of the classroom scene thanks to a new solar project on campus plus their active environmental club, G.R.E.E.N. Scene. The campus has a new photovoltaic system aimed at both education and sustainable energy. Some of this will be used by resident engineering faculty and students for projects. Goals for the photovoltaic system include using it to expand and diversify the curriculum across all disciplines, utilized in the engineering program, linking to business and more.

(Continued on Page 2)

BE READY FOR AN INTERVIEW

Although interviews are not easy to obtain, when one occurs, you must be ready! The following are things to consider if you are fortunate enough to get that interview.

Before the interview:

- Prepare your one-minute personal statement—you know, that one that happens in almost every interview situation, where the statement is made, "Tell me about yourself."
- Know all about the company/organization that you are interviewing for, and prepare a minimum of three questions to ask your interviewer about the company, the job, and the general industry.
- Obtain permission from your references to use their names—a good company will give them a call.
- Be sure to check out and research what the salaries are for area in the job you're interviewing for—know your worth!

Be sure to bring:

- A number of copies of your resume on good quality paper.
- A list of your references and contact information.
- Directions on how to get to the interview location.
- A folder with paper to take notes. Even if you don't use the notes, you will look like you are organized, interested, and thorough.

During the interview:

- Be sure to be yourself—relaxed and accommodating. You should know about the company, but also learn more about them.

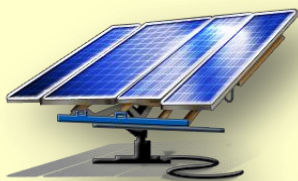
(Continued on Page 3)

RE-INVENTING CAREERS *(Continued from Page 1)*

Despite these unique BTC and UW-Rock County programs, matching higher education to future needs is not easy. Most community colleges across the country don't have the expertise or funding to research and implement new programs to train people for green jobs, and in fact, there's little agreement on what the skill standards should be for such jobs, said Marcy Drummond, V.P. for Workforce and Economic Development at Los Angeles Trade-Technical College during a recent online seminar about education for the green economy.

There seems to be data on a national level but little at local or regional levels. The Solar Energies Industry Association predicts that 110,000 solar-related jobs will be created by the end of 2010. So that there doesn't become a 'glut' of workers in a particular field causing oversaturation, partnerships between education and workforce development institutions are critical. Even if it's not clear where the job market is heading, upgrading skills and offering greener services to customers can accelerate demand. We can only hope such is the case, as we seem to be ahead of the curve with what our local colleges are implementing.

"You need to be in a field you really enjoy, where it becomes a pleasure to work, not a chore."



UW-Rock County's new solar photovoltaic system not only expands and diversifies the curriculum, but links to area businesses to help grow projects and internships with students and faculty while allowing for expansion and sustainable long-term learning.

INTERVIEW READINESS *(Continued from page 2)*

- Be sure to thank the interviewer at the end, and know your next steps.
- Ask the interviewer for his/her card so you can send a follow-up letter.

After the interview:

- Write down your thoughts as soon after the interview as possible.
- Write a follow-up thank you letter reminding the interviewer of your qualities.

Of course, be sure your resume is updated and if you haven't done it, develop your profile. Remember to use the free services offered to you through Monster.com and the **Hire a Neighbor** program offered to businesses at no cost through the SWWDB. Contact Eric Kuznaciac at the Job Center at 741-3502.

SEE DISCOVER JANESVILLE INTERVIEWS

A number of local dislocated workers have been featured on the award-winning **Discover Janesville** TV program on Janesville Cable Access TV. For those who do not get that channel, these programs can also be viewed online on YouTube.

The most recent interview features John Ramsdell, a dislocated worker (Lear) now attending UW-Rock County to become an elementary school teacher. The programs centers on John's experiences at school and different subjects as well as the transition he has gone through to make the transition. John gives useful advice to other dislocated workers considering returning to school, while sharing his personal reflections on this difficult but ultimately fulfilling experience.

Go to the following:

<http://www.youtube/watch?v=lgGpiQ8iZw> (1st part)

http://www.youtube.com/watch?v=uQkwNsg4_8 (2nd part)

or go to www.discoverjanesville.com

NOTE: the letter after the = sign in the part 1 address is an 'l' as in leopard. The two spaces following the 4 in part 2 are underscores just before the 8. Addresses need to be accurate to ensure it loads the correct show.

MAGIC PROJECT 'TAKES SERVICES TO THE PEOPLE'

MAGIC is a mobile, community-based resource project intended to respond to the increasing need for services and access for benefits for those qualified. MAGIC stands for 'Mobile Advocacy: Giving Information to the Community.' The focus is on assisting households to make connections to available resources, including issues such as housing, legal, food, utility, medical, mental health/AODA, education, employment, veteran, senior, financial and transportation. MAGIC meets with you one-on-one for needs, helps in completing on-line applications, plans 'next steps,' has local providers on-site, and makes referrals. Sessions are three hours long, and are held in community rooms in Rock and Walworth Counties. The next session is Wednesday, November 11, from 1-4:30 p.m. at the Evansville Senior Center, 320 Fair St. Visit their web site for more info—www.community-action.org.



Interviews with dislocated workers can be viewed on the Discover Janesville JATV program or by going to YouTube or Discover Janesville on your computer. (See story at left).

CHECK OUT THESE OPPORTUNITIES

There are several **Dislocated Worker** group sessions that may be of interest to you. Call the Rock County Job Center for information or to schedule a session—Julie Funk at (608) 741-3462 or Carol Kohl at (608) 741-3418. The Annex is located at 1795 Lafayette Dr., Janesville (the Local 95 UAW Hall).

Typing (at Annex)	Tuesday, Nov. 3, 10 a.m.-noon
Pre-Assessment Workshop	Wednesday, Nov. 4, 9-11 a.m.
Java & Jobs (Annex)	Friday, Nov. 6, 9:30-10:30 a.m.
Resume 101 (Annex)	Friday, Nov. 6, 10:30 a.m.-noon
Pre-Assessment Workshop	Monday, Nov. 9, 1:30-3:30 p.m.
Getting Through the Tough Times	Tuesday, Nov. 10, 9-1 a.m.
Dislocated Worker Orientation	Thursday, Nov. 12, 1-3 p.m.
Java & Jobs (Annex)	Friday, Nov. 13, 9:30-10:30 a.m.
Interviewing Skills (Annex)	Friday, Nov. 13, 10:30 a.m.-noon
Jumpstart Your Job Search (Annex)	Monday, Nov. 16, 10 a.m.-noon
Email Basics (Annex)	Tuesday, Nov. 17, 1-3 p.m.
Java & Jobs (Annex)	Friday, Nov. 20, 9:30-10:30 a.m.
Resume 201 (Annex)	Friday, Nov. 20, 10:30 a.m.-noon
Pre-Assessment Workshop	Friday, Nov. 20, 10 a.m.-noon
Things To Do When the Paycheck Stops	Monday, Nov. 23, 1-3 p.m.
Pre-Assessment Workshop	Tuesday, Nov. 24, 2-4 p.m.
Dislocated Worker Orientation	Wednesday, Nov. 25, 9-11 a.m.
Job Center/Annex Closed	Nov. 26-27, Thanksgiving

TENTATIVE DECEMBER SCHEDULE

Pre-Assessment Workshop	Thursday, Dec. 3, 9-11 a.m.
Java & Jobs (Annex)	Friday, Dec. 4, 9:30-10:30 a.m.
Practice Interviewing (Annex)	Friday, Dec. 4, 10:30 a.m.-noon
Dislocated Worker Orientation	Monday, Dec. 7, 2-4 p.m.
Jumpstart Your Job Search (Annex)	Tuesday, Dec. 8, 1-3 p.m.
Pre-Assessment Workshop	Wednesday, Dec. 9, 1-3 p.m.
Getting Through the Tough Times	Thursday, Dec. 10, 1-3 p.m.
Java & Jobs (Annex)	Friday, Dec. 11, 9:30-10:30 a.m.
Resume 101 (Annex)	Friday, Dec. 11, 10:30 a.m.-noon
Pre-Assessment Workshop	Monday, Dec. 14, 10 a.m.-noon
Email Basics (Annex)	Tuesday, Dec. 15, 10 a.m.-noon
Things To Do When the Paycheck Stops	Wednesday, Dec. 16, 9-11 a.m.
Typing (Annex)	Thursday, Dec. 17, 2-4 p.m.
Java & Jobs (Annex)	Friday, Dec. 18, 9:30-10:30 a.m.
Interviewing (Annex)	Friday, Dec. 18, 10:30 a.m.-noon
Dislocated Worker Orientation	Tuesday, Dec. 22, 9-11 a.m.
Job Center/Annex Closed	Dec. 24-25 & Dec. 31/Jan 1
Pre-Assessment Workshop	Wednesday, Dec. 30, 2-4 p.m.

NOVEMBER 2009

S	M	T	W	T	F	S
1	2	3	4	5	6	7
8	9	10	11	12	13	14
15	16	17	18	19	20	21
22	23	24	25	26	27	28
29	30					

DECEMBER 2009

S	M	T	W	T	F	S
		1	2	3	4	5
6	7	8	9	10	11	12
13	14	15	16	17	18	19
20	21	22	23	24	25	26
27	28	29	30	31		

QUOTE OF THE DAY

“Excellence is not a skill. It is an attitude.”
---Ralph Marston

The **CORD Newsletter** is designed to provide helpful tips and information to area dislocated workers. Have comments or ideas for stories?

Contact the editor:
Gregg Bosak, SWWDB,
Rock County Job Center,
g.bosak@swwdb.org or
call (608) 741-3463